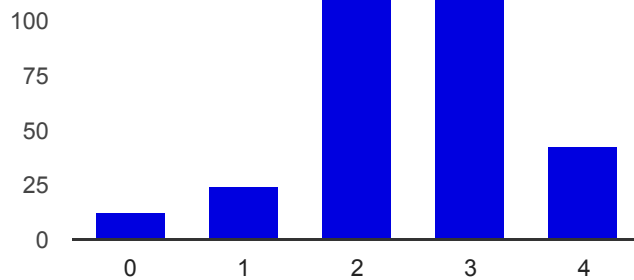
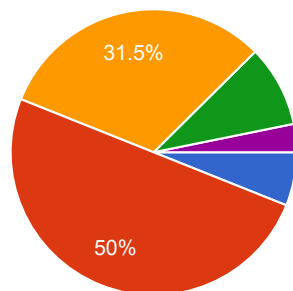

Summary

1. How do some bacteria become resistant to medicines developed to fight them?



Not at all interesting: 0	13	4.1%
1	24	7.6%
2	116	36.7%
3	120	38%
Very interesting: 4	43	13.6%

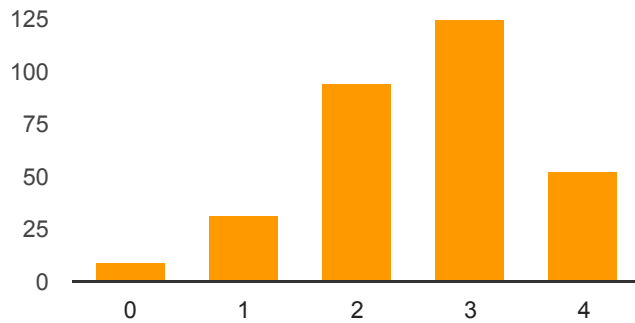
How much time would you like to spend investigating the question above?



0 days (this isn't interesting to me at all)	19	6.1%
1-2 days	157	50%
1 week	99	31.5%
2 weeks	29	9.2%

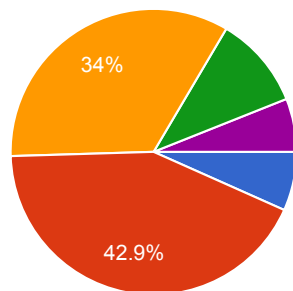
3 weeks (I really want to dig into this question) **10** 3.2%

2. Why are some diseases more common among some groups of people than in others?



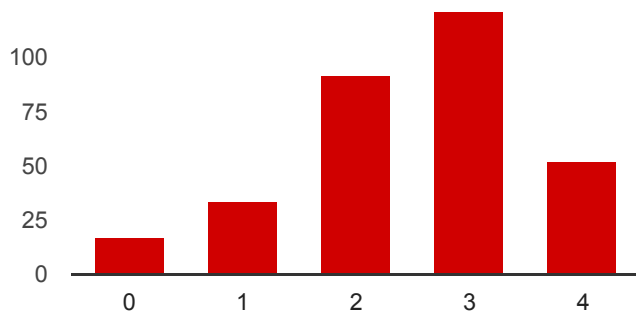
Not at all interesting: 0	9	2.9%
1	32	10.2%
2	95	30.3%
3	125	39.8%
Very interesting: 4	53	16.9%

How much time would you like to spend investigating the question above?



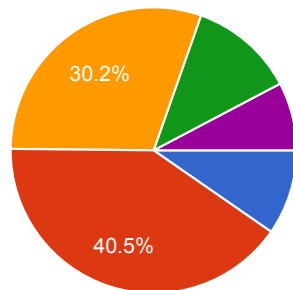
0 days (this isn't interesting to me at all)	21	6.7%
1-2 days	135	42.9%
1 week	107	34%
2 weeks	33	10.5%
3 weeks (I really want to dig into this question)	19	6%

3. What's with diseases that "run in families"?



Not at all interesting: 0	17	5.4%
1	33	10.5%
2	91	29%
3	121	38.5%
Very interesting: 4	52	16.6%

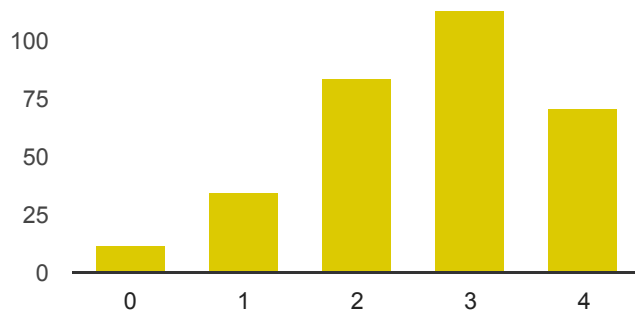
How much time would you like to spend investigating the question above?



0 days (this isn't interesting to me at all)	30	9.6%
1-2 days	126	40.5%
1 week	94	30.2%
2 weeks	37	11.9%
3 weeks (I really want to dig into this question)	24	7.7%

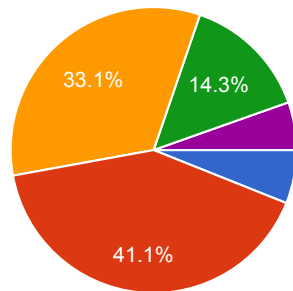
4. How could a "super-bug" produce an epidemic that

affects a whole population?



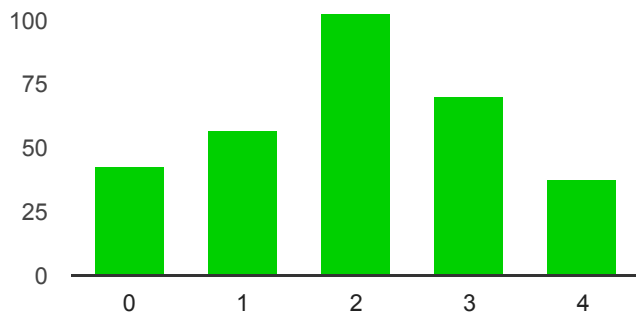
Not at all interesting: 0	12	3.8%
1	35	11.1%
2	84	26.7%
3	113	35.9%
Very interesting: 4	71	22.5%

How much time would you like to spend investigating the question above?



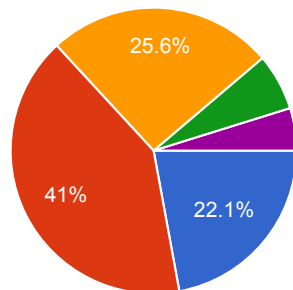
0 days (this isn't interesting to me at all)	19	6.1%
1-2 days	129	41.1%
1 week	104	33.1%
2 weeks	45	14.3%
3 weeks (I really want to dig into this question)	17	5.4%

5. Why do different species have strikingly similar embryos?



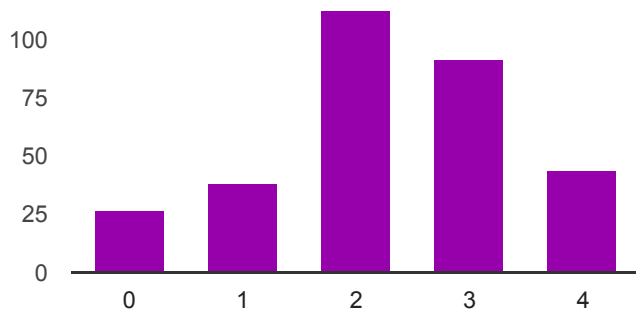
Not at all interesting: 0	43	13.8%
1	57	18.3%
2	103	33.1%
3	70	22.5%
Very interesting: 4	38	12.2%

How much time would you like to spend investigating the question above?



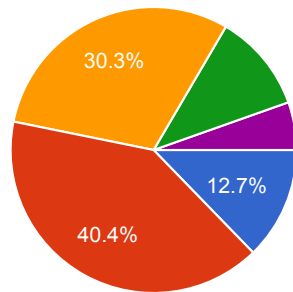
0 days (this isn't interesting to me at all)	69	22.1%
1-2 days	128	41%
1 week	80	25.6%
2 weeks	20	6.4%
3 weeks (I really want to dig into this question)	15	4.8%

6. Why do some members of a species survive when the conditions in the environment change, while others go extinct?



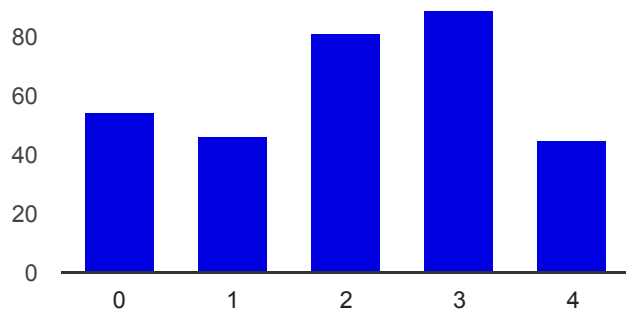
Not at all interesting: 0	27	8.6%
1	39	12.4%
2	113	35.9%
3	92	29.2%
Very interesting: 4	44	14%

How much time would you like to spend investigating the question above?



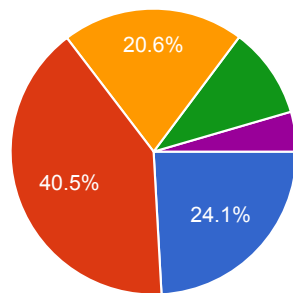
0 days (this isn't interesting to me at all)	40	12.7%
1-2 days	127	40.4%
1 week	95	30.3%
2 weeks	35	11.1%
3 weeks (I really want to dig into this question)	17	5.4%

7. How are dogs and wolves related?



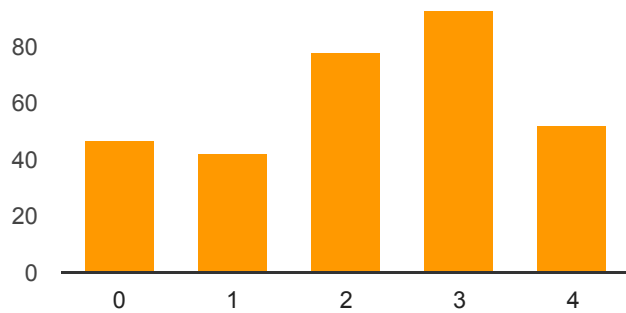
	1	46	14.6%
	2	81	25.7%
	3	89	28.3%
Very interesting:	4	45	14.3%

How much time would you like to spend investigating the question above?



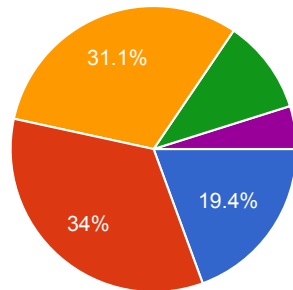
0 days (this isn't interesting to me at all)	75	24.1%
1-2 days	126	40.5%
1 week	64	20.6%
2 weeks	32	10.3%
3 weeks (I really want to dig into this question)	14	4.5%

8. What explains the differences and similarities among fossils we find of ancestors of humans and modern humans?



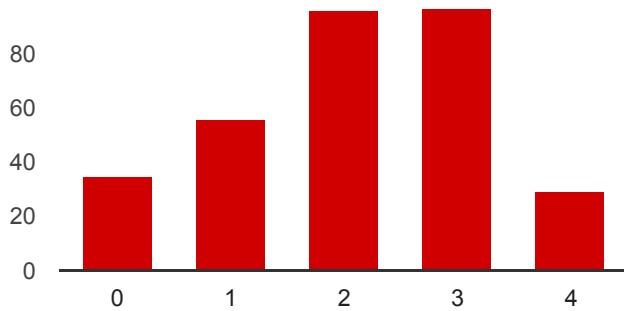
Very interesting: 0	48	15.8%
1	42	13.5%
2	78	25%
3	93	29.8%
Very interesting: 4	52	16.7%

How much time would you like to spend investigating the question above?



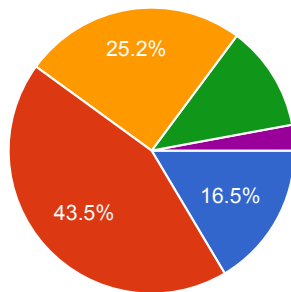
0 days (this isn't interesting to me at all)	60	19.4%
1-2 days	105	34%
1 week	96	31.1%
2 weeks	33	10.7%
3 weeks (I really want to dig into this question)	15	4.9%

9. What explains the similarities in body structure between seemingly different organisms?



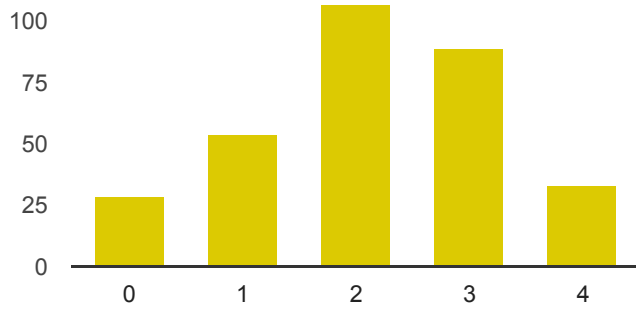
3 **97** 31%
 Very interesting: 4 **29** 9.3%

How much time would you like to spend investigating the question above?



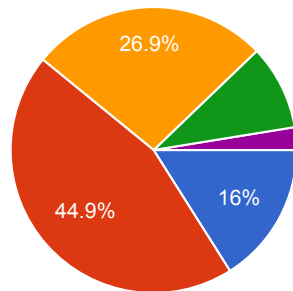
0 days (this isn't interesting to me at all)	51	16.5%
1-2 days	135	43.5%
1 week	78	25.2%
2 weeks	37	11.9%
3 weeks (I really want to dig into this question)	9	2.9%

10. What happens when organisms are not well adapted to changes in their environment?



Very interesting: 4 **33** 10.6%

How much time would you like to spend investigating the question above?



0 days (this isn't interesting to me at all)	50	16%
1-2 days	140	44.9%
1 week	84	26.9%
2 weeks	30	9.6%
3 weeks (I really want to dig into this question)	8	2.6%